



CASE STUDY:

Litigation Support, Forensic Analysis/Defect Correction

PROJECT DETAILS:

High School located in rural Tennessee, consisting of approximately 60,000 square feet of single story masonry construction with metal standing roof.

The school experienced mold propagation resulting in a Personal Injury case.



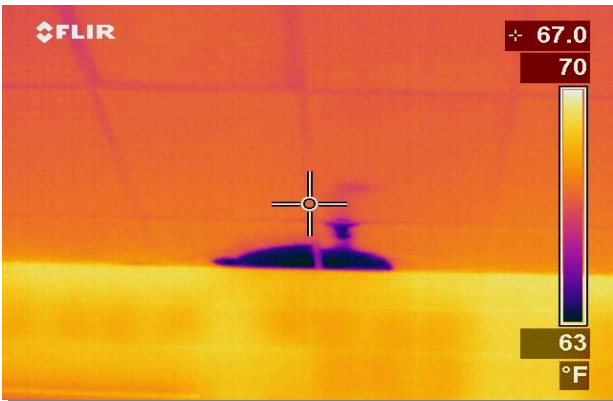
SCOPE OF SERVICES:

BioPure Consulting was engaged by the School Board's attorneys to investigate the source of the mold, and to provide recommendations to remedy the defects.

Following a detailed investigation, BioPure determined that a combination of poor air circulation, construction defects and incorrect site grading contributed to the problems.

BioPure provided expert witness service to the Court concerning a remediation plan and scope which was accepted by Court order. Over the next two years work was phased to accommodate both the schools schedule and the Counties budget.

BioPure providing scope specification, oversaw the bidding and work execution to successfully eliminate the mold propagation.



The scope of work managed by BioPure included modifications to the buildings chilled water systems, improvements to thermal insulation, reconstruction of portions of the masonry façade, construction of a new theater stage, roof and ventilation repairs, and the complete design and re-grading of the 7 acre site inclusive of a new drainage system.



The remediation work was executed on budget and complied with the Court ordered timeframe.

For additional information, please visit us at www.biopure-consulting.com or call us on 404-817-9505 to schedule a consultation.