



Medical College of Georgia Cancer Center, Augusta GA



Curtain-wall ASTM intrusion testing



Field Training of installation critical trades

PROJECT NAME :

**Medical College of Georgia Cancer Center,
Augusta GA**

Envelope Design Consulting & Testing

PROJECT DETAILS :

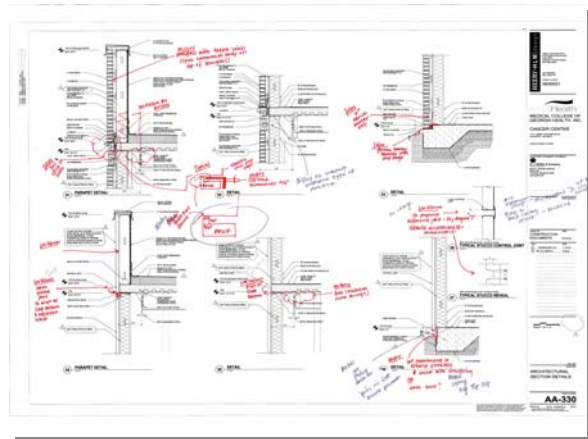
The project consisted of a 167,000 sq/ft Cancer Research Center with construction cost of \$54 million. Due to the critical environment a key emphasis was placed on envelope integrity and moisture and dust management during construction.

SCOPE OF SERVICES :

BioPure was engaged by the General Contractor to review the Architects envelope design and assist in the development of critical details.

During our review, which included advanced hygrothermal computer modeling, we identified a number of potential failure points and worked closely with the Architect to develop the appropriate details/specifications.

Subsequently, mock-ups were developed/tested and the necessary training provided onsite to the various installation critical trades. Additionally, we conducted frequent QA/QC inspection and testing, moisture management, and associated remedial work tracking/verification.



Initial 'red-line' review of Architectural details