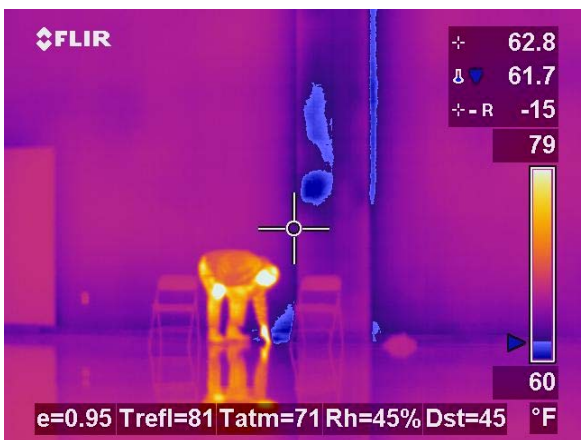




Full-scale façade water intrusion test Charlotte, NC



42 Storey The Mansion ASTM E1105 Test Atlanta, GA



Infrared survey noted moisture intrusion, Atlanta GA

Consulting Services For:

General Contractors

Biopure Consulting offers General Contractors a 'best in class' consulting service aimed at reducing the risk associated with executing inaccurate or incorrect building envelop designs. We tactically tailor our review, inspection and testing services to help mitigate risk; by feeding back into the design and construction process the lessons learned investigating industry failures.

Scope of Services:

- Infrared Thermography moisture/thermal mapping.
- "Greenguard Building Construction Certification SM" by Greenguard Environmental Institute[®] - certifies the design, construction and ongoing operations of newly constructed multifamily and commercial properties.
- Mock-up assembly development/design and testing.
- Weather envelope integrity, air-water leakage, thermal and condensation- review, inspection and testing. QA/QC
- Moisture management and guidance during execution.
- Due diligence, on-site observation reports and documentation - envelope QC/QA.
- ASTM Field Testing – "E783-02(2010)- Standard Test Method for Field Measurement of Air Leakage Through Installed Exterior Windows & Doors".
- ASTM Field Testing – "E1105-00 (2008) - Standard Test Method for Field Determination of Water Penetration of Installed Exterior Windows, Skylights, Doors, and Curtain Walls, by Uniform or Cyclic Static Air Pressure Difference.
- ASTM Field Testing – "E2128-12 - Standard Guide for Evaluating Water Leakage of Building Walls".
- ASTM Field Testing – "F1869-11 - Standard Test Method for Measuring Moisture Vapor Emission Rate of Concrete Subfloor Using Anhydrous Calcium Chloride".
- ASTM Field Testing – "F2420-05 (2011) - Standard Test Method for Determining RH on Surface of Concrete Floor Slab Using RH Probe Measurement and Insulated Hood".
- ASTM Field Testing – "F2170-11 - Standard Test Method for Determining Relative Humidity in Concrete Floor Slabs Using in situ Probes".
- ASTM Inspections – "C1153-10 - Standard Practice for Location of Wet Insulation in Roofing Systems Using Infrared Imaging".
- ASTM Inspections – "E1643-11 - Practices for Installation of Water Vapor Retarders Used in Contact with Earth or Granular Fill Under Concrete Slabs".
- ASTM Inspections – "E2112-07 - Standard Practice for Installation of Exterior Windows, Doors and Skylights".